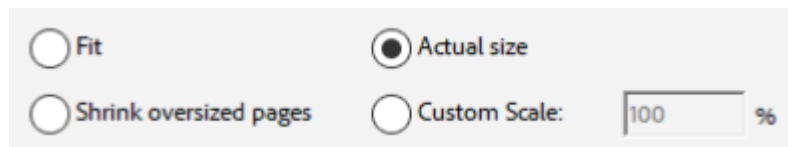
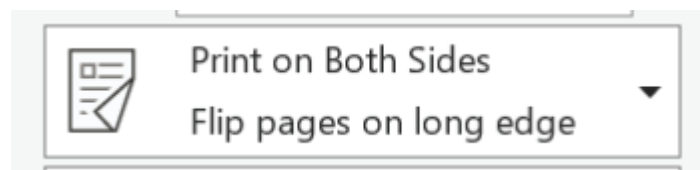


HOW TO PRINT YOUR CARDS

1. At a print shop: ask the printer to print your cards on both sides, on 200gsm paper.
2. At home: buy a block of paper of min 200gsm paper and print your card, selecting the options "Actual size" and "print on both sides".



Print settings interface showing options: Fit, Actual size, Shrink oversized pages, Custom Scale: 100 %



Print settings interface showing options: Print on Both Sides, Flip pages on long edge

If you print at home, make a trial run with a plain copy paper sheet to make sure you get the correct alignment. For better results, cut the cards with a paper trimmer. If you don't have one, a paper knife and ruler will do the job. To make your cards last longer, you can use A4 laminating pouches so it protects your cards. Then trim out as above

You could even round corner the edges.





INVESTOR



INVESTOR



INVESTOR



INVESTOR



INVESTOR



INVESTOR

£



FRED
THE FRIEND

£24k MAXIMUM

25%	50%	75%
£6k	£12k	£18k

££



ANGELA
THE ANGEL

£32k MAXIMUM

25%	50%	75%
£8k	£16k	£24k

£££

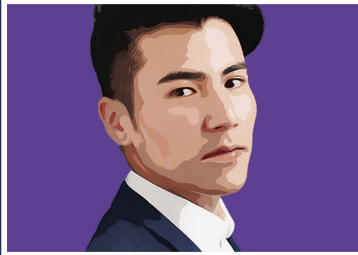


BARNEY
THE BANKER

£32k MAXIMUM

25%	50%	75%
£8k	£16k	£24k

££££



AXEL
THE ACCELERATOR

£48k MAXIMUM

25%	50%	75%
£12k	£24k	£36k

£££££



VINCENT
THE VC INVESTOR

£80k MAXIMUM

25%	50%	75%
£20k	£40k	£60k

£££££



CORA THE
CORPORATE INVESTOR

£80k MAXIMUM

25%	50%	75%
£20k	£40k	£60k



CYBER DEFENCE



CYBER DEFENCE



CYBER DEFENCE



CYBER DEFENCE



CYBER DEFENCE



CYBER DEFENCE

DATA BACKUP



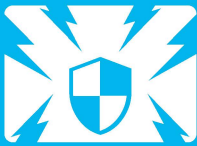
£4k

SECURE BY DESIGN READER



£10k

DDoS PROTECTION



£4k

WEB PORTAL WHITELISTING



£4k

INTRUSION PREVENTION



£8K

MFA FOR DOCTORS



£2k



CYBER DEFENCE



CYBER DEFENCE



CYBER DEFENCE



CYBER DEFENCE



CYBER DEFENCE



CYBER DEFENCE

SECURITY TRAINING - DOCTORS



£8k

ANTIVIRUS FOR EMPLOYEES



£2K

SECURITY TRAINING - EMPLOYEES



£8k

MFA FOR EMPLOYEES



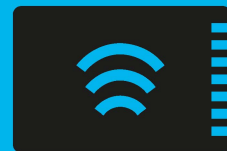
£2k

ANTIVIRUS FOR DOCTORS



£2K

STANDARD READER



£4K



**CYBER
ATTACK**



**CYBER
ATTACK**



**CYBER
ATTACK**



**CYBER
ATTACK**



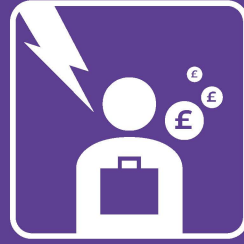
**CYBER
ATTACK**



**CYBER
ATTACK**



**RANSOMWARE
ATTACK ON
DOCTORS**



**RANSOMWARE
ATTACK ON
EMPLOYEES**



**SUPPLY CHAIN
ATTACK**



**INDUSTRIAL
SABOTAGE**



**SOCIAL
ENGINEERING
ATTACK ON
DOCTORS**



**SOCIAL
ENGINEERING
ATTACK ON
EMPLOYEES**



**CYBER
ATTACK**



**CYBER
ATTACK**



**CYBER
ATTACK**



**CYBER
ATTACK**



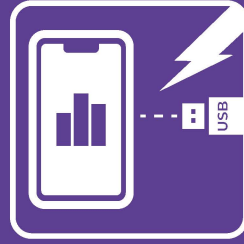
**CYBER
ATTACK**



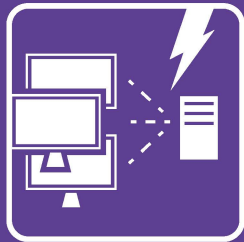
**CYBER
ATTACK**



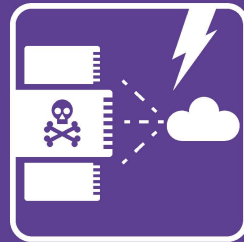
**BLACK HAT
ATTACK**



**DATA
EXFILTRATION**



**DDoS
STANDARD**



**DDoS
READER**



**MAN IN
THE MIDDLE
ATTACK**



**SQL INJECTION
/
DATA THEFT**



**CYBER
ATTACK**



**CYBER
ATTACK**



**CYBER
ATTACK**



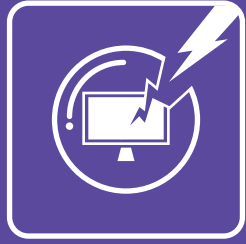
**CYBER
ATTACK**



**CYBER
ATTACK**



**CYBER
ATTACK**



ZERO DAY
ATTACK

